



Bowling Green Lighting

Hosted By Brendan Balcombe

Managing Director of Aurora Electrical Services

Meeting Australian Standards: AS2560.2.8:

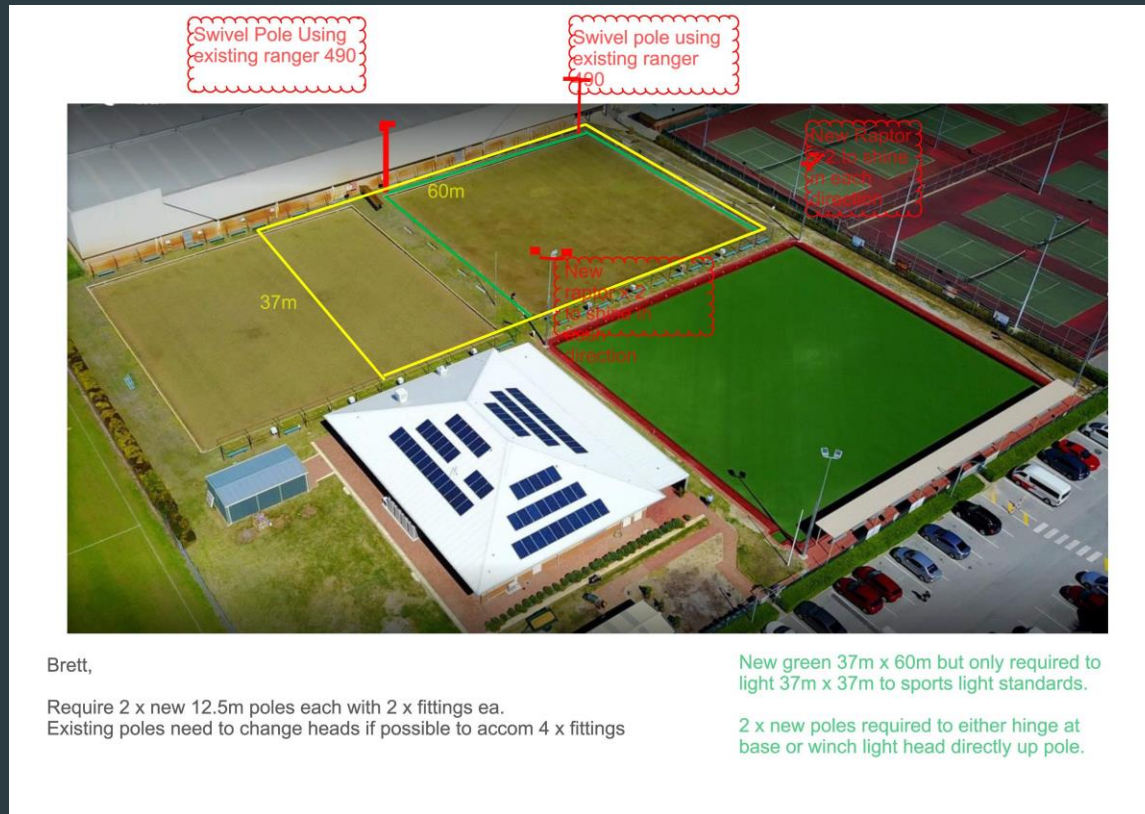
- The main objective when lighting outdoor bowling greens, is to not only provide an even spread of light but to maximize the lux levels on the four edges of the green where most of the action takes place. Asymmetric beam flood lighting is essential to reduce glare and ensure uniformity levels are as high as possible.
- The **Australian Standards for outdoor bowling green lighting AS2560.2.8**, specifies 100 lux average as the required level of lighting to ensure a game of bowls can be played safely and comfortably.
- Information taken from <https://legacysportlighting.com/regulations-for-lighting-bowling-greens-australia/>

Willetton bowls Club:



Pre Planning Stage:

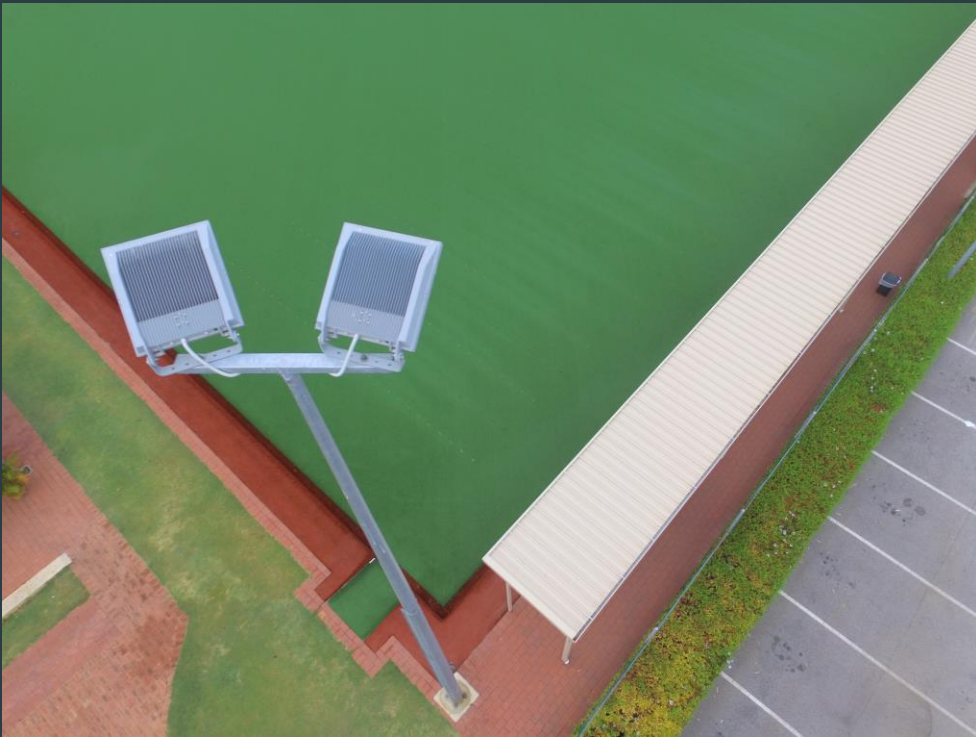
- Be clear in what your club is trying to achieve.
- Form a Sub-Committee with local knowledge.



Important Points to Check When Upgrading Bowling Green Lighting:

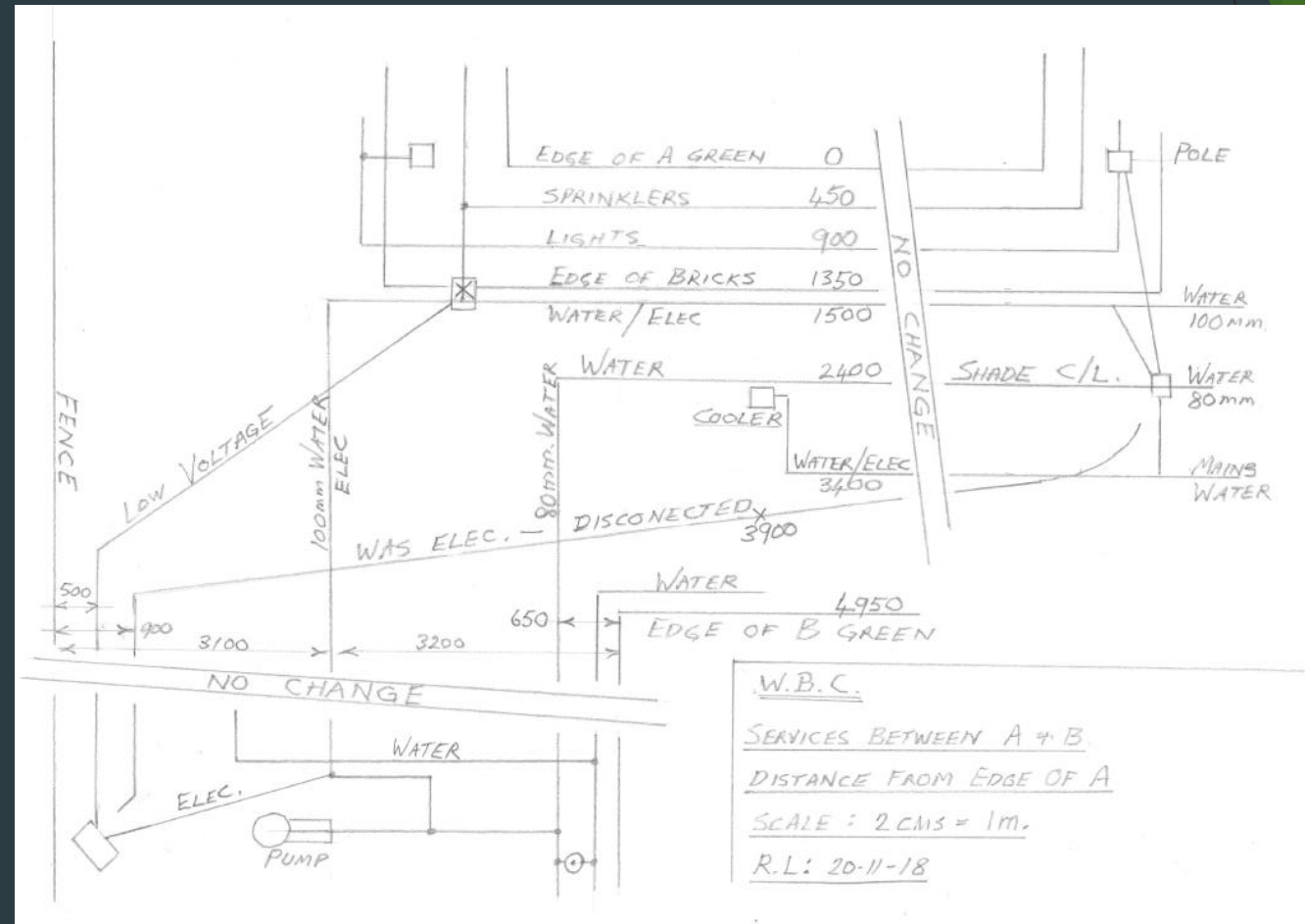
- Are your existing poles up to handling the weight? If not, choose your lights with care to make sure they are the same or similar to the lamps being replaced.
- If replacing the poles, ensure the installation is in accordance with council requirements and look into the warranties.
- Have you checked existing lux levels and cross referenced the new plan to see what advantage there will be?
- Has the lighting supplier proved that the uniformity and lighting levels will comply with the standards?
- Have you achieved a power-usage advantage or would staying with your old MH fittings be more economical?
- Information taken from <https://legacysportlighting.com/regulations-for-lighting-bowling-greens-australia/>

Solution for new and existing lighting at Willetton bowls club:



Planning Stage:

- Schedule of works
- Drawings
- Set a budget



Existing Infrastructure:

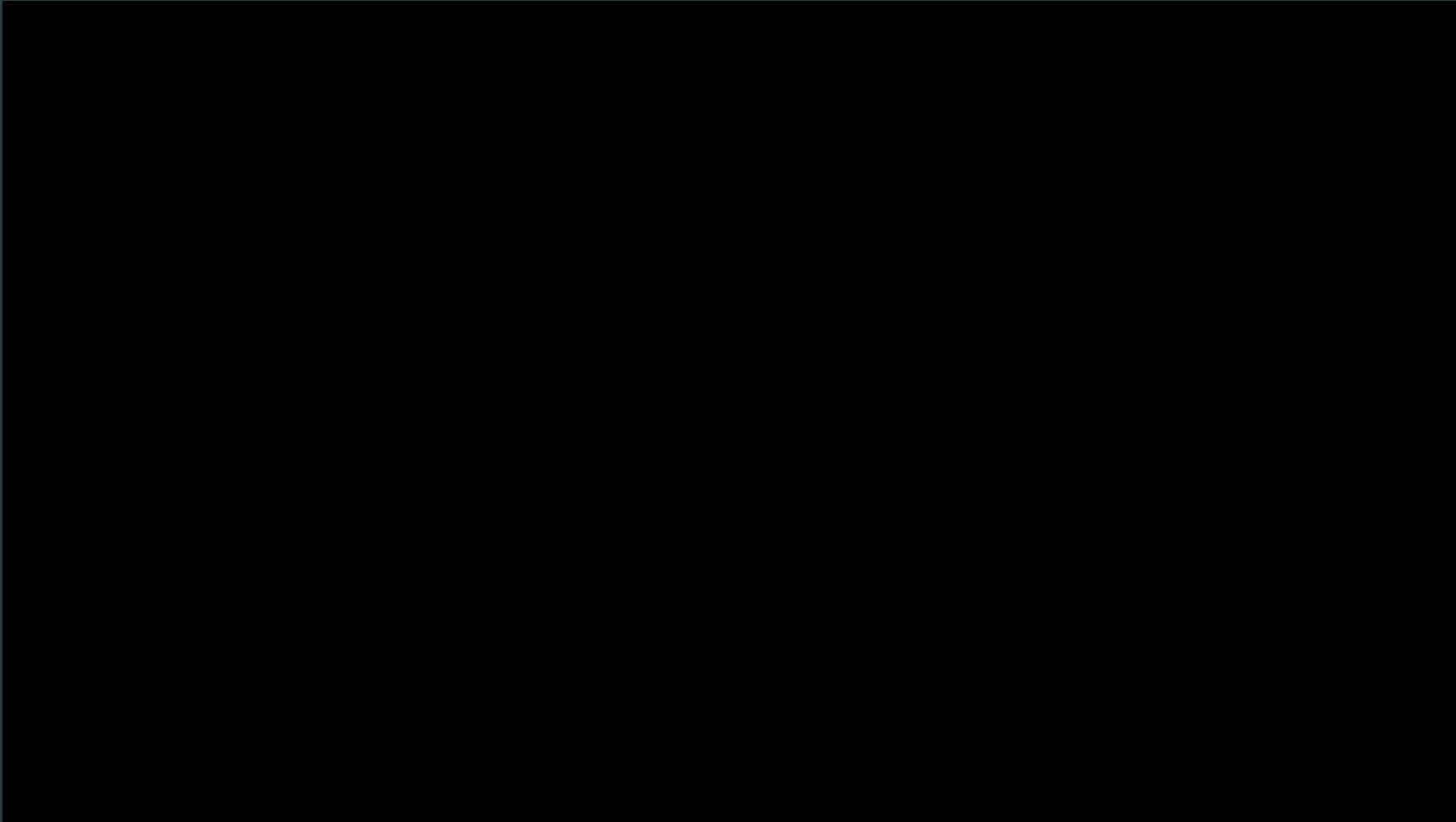


Importance of selecting the right trades:

- Do your due diligence on your trades.
- Are they affiliated with an industry body?
- Do they have the relevant insurances, OHS System, Access to resources.
- Previous work history.
- Importance of cleanliness.



Types of lighting available:



Importance of good light fitting selection:

- Degeneration of lighting levels overtime
- Glare
- Uniformity
- Light demonstration at our stand



Q&A Time